

NGPF BOARD APPROVES ART AUCTION

The NGPF originally envisioned a dedicated narrow gauge museum facility where models, portions of layouts, books and other important paperwork, and artwork could be preserved and displayed. While this idea has not been abandoned, it has more realistically been moved far into the future. The NMRA exhibit project, in which the NGPF is participating, located within the California State Railroad Museum in Sacramento, is nearing completion. This major exhibit would have been opened had it not been for the worldwide virus situation. The anticipated success of this exhibit will guide the process and extent to which a future model railroad museum and/or narrow gauge museum might be possible.

Rather than waiting for the construction of a new museum, the NGPF Board decided that given the current needs of groups undertaking the funding of preservation projects, a better use of the funds would be to participate in these current preservation projects rather than holding/storing this artwork. Therefore, the funds raised by the auction of this artwork will be dedicated to funding preservation projects.

The St. Louis 2020 Narrow Gauge Convention Committee, in conjunction with the NGPF will be offering this original artwork via live auction at the Saturday evening convention gathering. This are mostly original paintings (see descriptions below, on the NGPF web page, as well as the St. Louis convention web site).

For those of you who are interested in any of this artwork, but will not be attending the St. Louis convention, the NGPF will accept bids on these paintings via direct contact with Allen Pollock, NGPF Exec. Director, any time prior to the convention in early September. You can find his contact telephone and email information in this newsletter and on

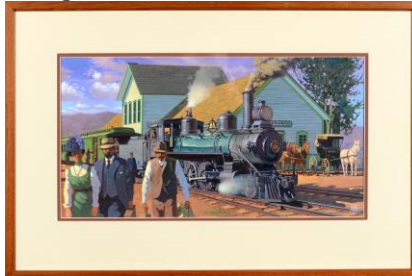
the NGPF web site. All bids received prior to the convention will be held in strictest confidence and will be entered during the actual live auction. Please keep in mind that the successful buyer will be responsible for all packaging and shipping costs.

Painting #1



Jim Finnell, Page 14 "The Southern" No. 40 on turntable. Opaque watercolor. Image 13"X17", wood frame 22"X18"

Painting #2



Jim Finnell, Cover "Durango" T-12 No. 169. Opaque watercolor. Image 12"X21", wood frame 19"x28"

Picture #3



Jim Finnell, 2 K-27's at Rico, from "Durango". Watercolor. Image 7"X14", metal gold frame 13.5"X20"

Painting #4



Jim Finnell, Cover "Chama, Cumbres" 1st Edition, Engine #494. Oil. Image 18"X14", gray frame 24"X19"

Painting #5



Jim Finnell, Reproduction/Print, #345, similar to page 35 "Durango". Image 23"X11", silver metal frame 24"X12"

Painting #6



Jim Finnell, #473 Crossing Bridge Santa Fe. One of a kind. Color photo. Image 18" X 14", wood frame 22" X 15"

INSIDE

- 2 More Paintings
- 3 From the Executive Director
- 4 Who We Are; What We Do

Painting #7 **Jan Rons**, #40 at Dallas Divide, page 197 "RGS 1", watercolor, image 31"X 18.5", walnut frame 36" X 23"



Painting #8 **Jan Rons**, Cover "Gunnison, watercolor, image 25" X 18", oak frame 32" x 25"



Painting #9 **Jan Rons**, page 207 "Gunnison" #318 at Ouray, watercolor, image 30"X18" walnut frame 36" X 24"



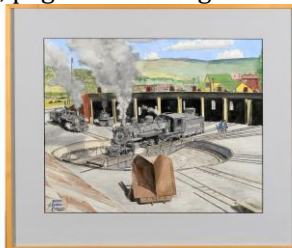
Painting #10 **Jan Rons**, page 182 "Chili Line" #416 Santa Fe Bridge, watercolor, image 30" X 18.5", wood frame 37.5" X 25.5 "



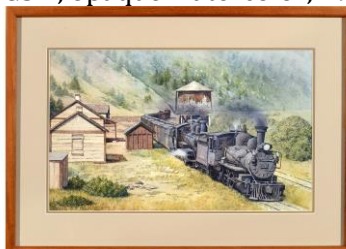
Painting #11 **John Coker**, Cover Chama, Cumbres 2nd Edition, Watercolor, Image 24.5" X 18", oak frame 32" X 26"



Painting #12 **John Coker**, #497 on turntable, page 36 "Durango" watercolor, image 19.5"X17" birch frame 26"X 35"



Painting #13 **Dick Sneary**, Cover RGS 1, opaque watercolor, 19" X 12.5", walnut frame 25" x 16"





Mission

The Narrow Gauge Preservation Foundation will preserve, exhibit and interpret significant prototype and model Narrow Gauge artifacts, as well as educate the public on the importance of Narrow Gauge railroading

THE BOARD OF DIRECTORS

SAM FURUKAWA

is a recognized photographer of Narrow Gauge, author and modeler. Retired from a long career at Microsoft Corporation, Sam is now a professor at Keio University in Tokyo, Japan. He is an author of three books on Colorado's preserved narrow gauge railroads. He has extensively photographed and videoed the operations of the surviving narrow gauge lines of Colorado and New Mexico.

FRED HILL

is the owner of the original Whistle Stop in Pasadena, and has long been active in railroad preservation for both narrow and standard gauges. Fred is involved with the Coach Yard and Thin Film Decals. He has served with distinction for many years as an officer and board member on several hobby trade associations.

JIMMY BOOTH

comes from a distinguished career as a principal at P-B-L (Peter Built Locomotives), a major supplier and importer of Sn3 locomotives and equipment. He also has dedicated much of his life researching the history of D&RGW narrow gauge equipment and has served as a historical advisor to both the Cumbres & Toltec Scenic and Durango and Silverton Railroads. Jimmy volunteers at a local museum as a steam consultant

W. LINDSAY RALEY Jr.

Is from Florida and operates his family citrus business. An avid Sn3 modeler, Lindsay is involved in Friends of the C&TS as well as other preservation activities.

STEVE FREDINI

Is President/CEO of the Heico Companies, a family owned business and past president and current member of the Slim Gauge Guild. He is active in the Sn3 community including Symposiums and Narrow Gauge Conventions

BOB STAAT

Has been involved in all aspects of the model railroad industry including running hobby shops, co-ownership of San Juan Car Shops and currently is co-owner of the American Model Train Exchange.

RICHARD RANDS

Has been involved in the hobby since his childhood with father Robert Rands starting Rail Craft (Micro-Engineering) and Clear Creek Models. Richard owns Berkshire Valley and Anvil Mountain models.

Executive DIRECTOR

ALLEN POLLOCK

Owens Fun and Games and Missouri Locomotive Co. He is past President of the NMRA, and retired from heading a government agency.

Painting #14 Dick Sneary, Cover "Alamosa/Salida" opaque watercolor, image 20" X 14.5", walnut frame, 26.5" X 21"



Painting #15, Dick Dorman, Ouray Coal Dock, ink sketch, image 12"X9", grey frame 15"X12"



CORPORATE SPONSORS WHO SUPPORT THE NGPF

- American Model Train Exchange
- Crusader Rail Services
- D&S NG RR
- Fun & Games / Missouri Locomotive Co.
- Green Frog Production
- Hickman, Palermo, et al, LLP
- International Hobbies
- Joseph Cammalleri
- Micro Engineering
- NCONRR Museum
- Raggs to Riches
- Rio Grande Models
- Trout Creek Engineering Inc.
- Warren Munson
- William J. Lock Esq.
- Young Goldstein Architects, Inc.

BOOK DISCOUNT for MEMBERS!

At the Denver NGPF Board meeting, a member only discount on the three published books by Sam Furukawa was announced. Buy one title and receive a 25% discount off retail; buy two and receive 35% and if you buy all three, 50%! Titles include the *Cumbres and Toltec* (\$49.95), *Durango and Silverton* (\$49.95) and *Narrow Gauge to the San Juan* (\$53.95). Books can be ordered from Bob Hayden at www.bobhayden.com; mention the discount and provide your member number.

From the Executive Director

For those of you keeping track, we did not publish a Fall 2019 (Vol. 6, No. 3) issue of the Preservation News. We are also late in getting this issue into your hands. I am going to work extremely hard to get the four issues into your hands this year, but I also need your help with materials that you think might be of interest to our membership. This, and future plans for materials (articles) rests with the submission of materials so that it can be published.

Additional ideas for content in this newsletter include more detailed introductions of the most recent members of the board, as well as brief introductions of the newest inductees to the Narrow Gauge Hall of Fame.

I would invite you to take a minute to go to the internet and review our new web page, found at www.thengpf.org. The additions to this page include being able to join the NGPF and pay online. This feature also allows payment of yearly dues and donations via PayPal and credit cards. We have also added the listing of the membership of the Hall of Fame, both by year of award, and alphabetical listing. The web page is a work in progress, and we welcome any comments about content that you would like to see included.

Please stay safe out there. Hopefully, we can gather in St. Louis for the National Narrow Gauge Convention in St. Louis this Fall.

Allen Pollock

CONTACT INFORMATION

P.O. Box 105741, Jefferson City MO 65110-5741
573-619-8532
execdirector@thengpf.org



P.O. Box 105741
Jefferson City, MO 65110

NARROW GAUGE PRESERVATION FOUNDATION

TO CONTACT US, PLEASE CALL, WRITE OR E-MAIL EXECUTIVE DIRECTOR ALLEN POLLOCK

PHONE: 573-619-8532

execdirector@thengpf.org

WHO WE ARE - WHAT WE DO AND HOW YOU CAN HELP

The Narrow Gauge Preservation Foundation (NGPF) was first established as the Narrow Gauge Trust in 2000. It was the dream of one of our board members to help preserve Narrow Gauge in both its prototype and model form. In 2002, the Narrow Gauge Trust Fund was incorporated as the Narrow Gauge Preservation Foundation and acquired non-profit status both within the State of California and as recognized by the Federal government. As a non-profit public benefit corporation, our mission is to establish interactive exhibits where the public can learn of the significant history of Narrow Gauge railroading as well as to support preservation activities and projects wherever possible.

A board of directors who do not receive compensation administers the foundation. The NGPF is proud that less than ten percent of its funds are spent on administrative costs. Thus, ninety plus percent of the funds raised go toward preservation efforts.

Our primary function is the creation of interactive exhibits where the public can be told the story of Narrow Gauge, such as the one formerly at Chama. As with that Chama exhibit, future exhibits will include interactive video presentations and models as well as dioramas, photographs and other graphics to explain the significance of the Narrow Gauge railroading experience. As a secondary function, the NGPF assists Narrow Gauge preservation efforts across North America. These efforts to date have exceeded over one million dollars and in some cases have made the difference between preservation and loss of significant artifacts.

The foundation is also unique in supporting the efforts of Narrow Gauge Preservation projects throughout the United States rather than concentrating on one area or one project. To date, the organization has supported projects on the Cumbres and Toltec Scenic Railroad, Ardenwood Park in California, Friends of Denver and Rio Grande Engine #169, the Southern Pacific Narrow Gauge Railroad Foundation, The Colorado Railroad Museum, the Southeast Narrow Gauge and Short line Museum in North Carolina and the Durango Railroad Historical Society, among others. In addition, we have preserved the collections of prominent narrow gauge modelers, extensive libraries of books as well as important art pieces depicting narrow gauge scenes.

One of the unique aspects of the NGPF is the use of matching grants to encourage the receiving parties to reach out to the public for support. Many of our grants require that the receiving agency establish within a set time frame, an equal number of individual new donations from members of the public, which not only shows support for the particular project, but also provides new sources of funding for the organization. As a result of this policy, organizations receiving our grants have reported increased donations. Donations to the Foundation are tax-deductible, acknowledged and appreciated. By donating, you support a variety of worthwhile projects and thereby enhance preservation of Narrow Gauge.